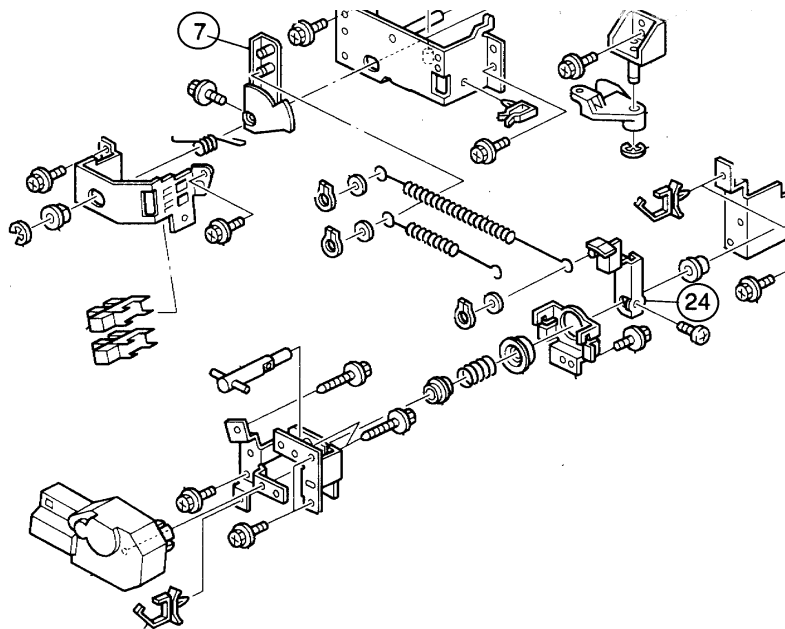


| | | | |
|--|---|--|--|
| Model: Stinger-C1 Paper Tray Unit / 1 Tray (PS400) | | Date: 15-Dec-99 | No.: MA861001 |
| Modified Article: Part number change | | Prepared by: K. Miura | |
| From: Technical Services Dept., GTS Division | | | |
| Reason for Modification: | <input type="checkbox"/> Parts catalog correction <input type="checkbox"/> To facilitate assembly <input type="checkbox"/> Part standardization | <input checked="" type="checkbox"/> Vendor change <input type="checkbox"/> To improve reliability <input type="checkbox"/> Other | <input type="checkbox"/> To meet standards () |

The vendors for the following parts have been changed.

| Old part number | New part number | Description | Q'ty | Int | Page | Index | Note |
|-----------------|-----------------|--------------------------------|------|-----|------|-------|------|
| A2672823 | A8602895 | Lever – DC Motor | 1 | O/O | 9 | 24 | |
| A2672759 | A8602893 | Actuator – Paper Height Sensor | 1 | O/O | 9 | 7 | |



Reissued: 19-May-00

| | | |
|---|-----------------|----------------|
| Model: Stinger-C1 Paper Tray Unit/1Tray (PS400) | Date: 15-Dec-99 | No.: MA861002a |
|---|-----------------|----------------|

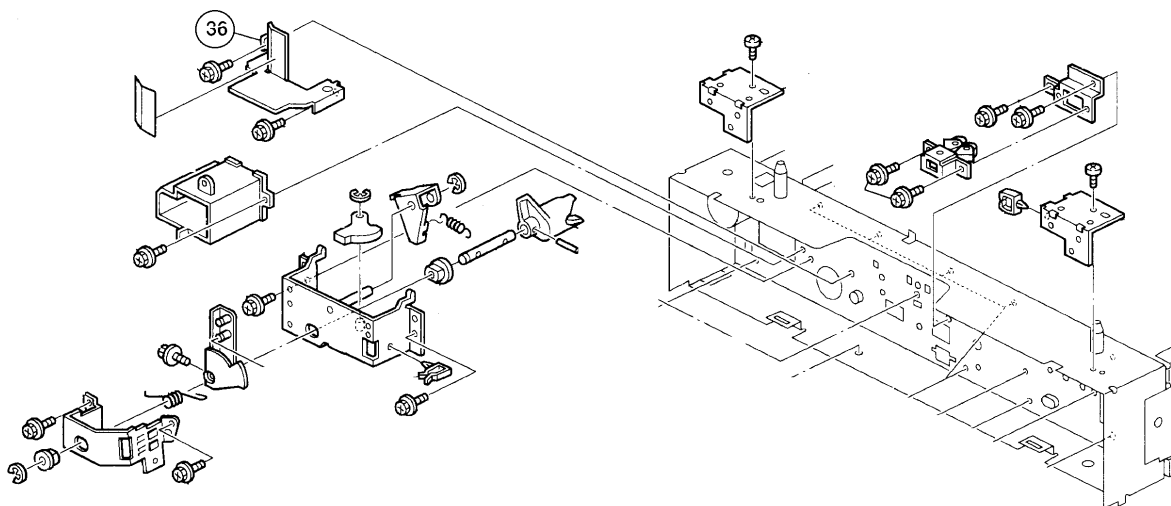
MB Correction

The items in bold italics have been corrected or added.

| | | | |
|--|--|---|--|
| Modified Article: Change in Spring Guard | | Prepared by: K. Miura | |
| From: Technical Services Dept., GTS Division | | | |
| Reason for Modification: | <input type="checkbox"/> Parts catalog correction | <input type="checkbox"/> Vendor change | <input type="checkbox"/> To meet standards () |
| | <input checked="" type="checkbox"/> To facilitate assembly | <input type="checkbox"/> To improve reliability | |
| | <input type="checkbox"/> Part standardization | <input type="checkbox"/> Other | |

| Old part number | New part number | Description | Q'ty | Int | Page | Index | Note |
|-----------------|-----------------|--------------|------|------------|------|-------|------|
| A8601190 | A8611186 | Spring Guard | 1 | X/O | 9 | 36 | |

The shape of the spring guard has been modified to facilitate removal.

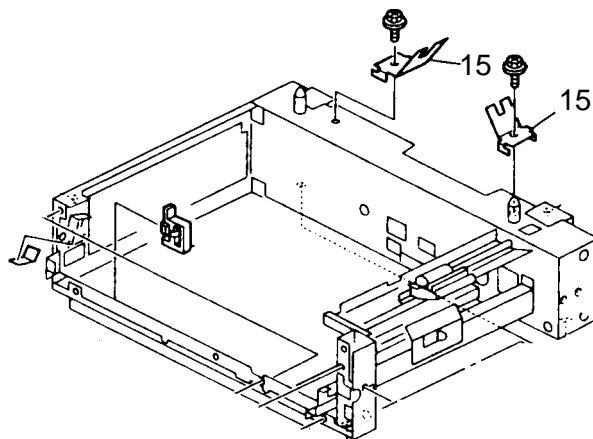


| MODEL NAME | DESTINATION | CODE | JAPAN PRODUCTION |
|------------|------------------------------------|---------|------------------|
| | | | SERIAL NO. |
| PS400 | All RICOH subsidiaries, NRG, SAVIN | A861-17 | H1691001380 |
| PS400 | Infotec | A861-26 | 3U81190001 |
| PS400 | Lanier | A861-55 | L0499110001 |

| | | | |
|--|---|--|---|
| Model: Stinger-C1 Paper Tray Unit /1Tray (PS400) | | Date: 23-Mar-00 | No.: MA861003 |
| Modified Article: Mylar added to plate springs | | Prepared by: K. Miura | |
| From: Technical Services Dept., GTS Division | | | |
| Reason for Modification: | <input type="checkbox"/> Parts catalog correction <input type="checkbox"/> To facilitate assembly <input type="checkbox"/> Part standardization | <input type="checkbox"/> Vendor change <input type="checkbox"/> To improve reliability <input checked="" type="checkbox"/> Other | <input type="checkbox"/> To meet standards () |

For increased safety, a mylar strip has been added to both plate springs located in between the paper feed unit and mainframe.

| Old part number | New part number | Description | Q'ty | Int | Page | Index | Note |
|-----------------|-----------------|--------------|------|-----|------|-------|------|
| H5194547 | A8601140 | Spring Plate | 2 | X/O | 3 | 15 | |

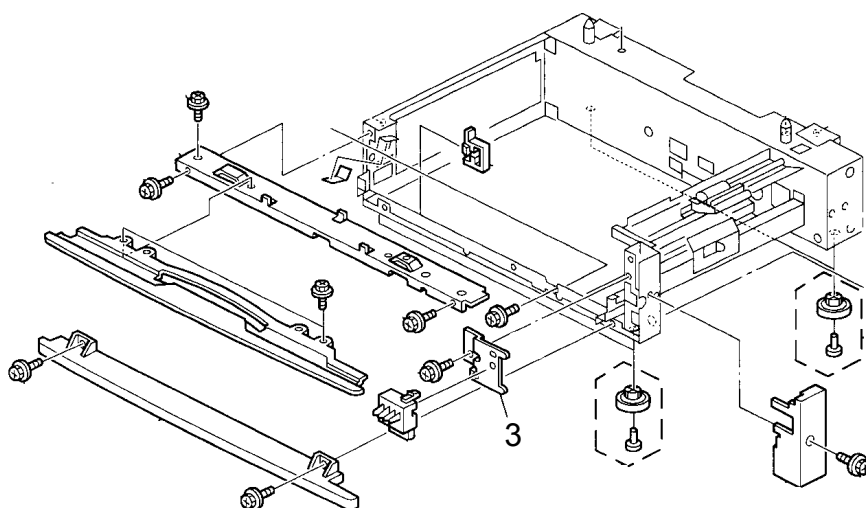


| MODEL NAME | DESTINATION | CODE | JAPAN PRODUCTION SERIAL NO. |
|------------|------------------------------------|---------|-----------------------------|
| | | | |
| PS400 | All RICOH subsidiaries, NRG, SAVIN | A861-17 | H1600200001 |
| PS400 | Infotec | A861-26 | 3U80200001 |
| PS400 | Lanier | A861-55 | L0490020001 |

| | | | |
|---|---|--|--|
| Model: Stinger-C1 Paper Tray Unit/1Tray (PS400) | | Date: 15-Jun-00 | No.: MA861004 |
| Modified Article: Shape Modification of Paper Size Sensor Bracket | | Prepared by: K. Miura | |
| From: Technical Services Dept., GTS Division | | | |
| Reason for Modification: | <input type="checkbox"/> Parts catalog correction <input type="checkbox"/> To facilitate assembly <input type="checkbox"/> Part standardization | <input type="checkbox"/> Vendor change <input checked="" type="checkbox"/> To improve reliability <input type="checkbox"/> Other | <input type="checkbox"/> To meet standards () |

The shape of the paper size sensor bracket has been changed to ensure proper paper size detection.

| Old part number | New part number | Description | Q'ty | Int | Page | Index | Note |
|-----------------|-----------------|-----------------------------|------|-----|------|-------|------|
| A8611121 | A8611123 | Bracket – Paper Size Sensor | 1 | X/X | 3 | 3 | |



RCL (Japan) Production

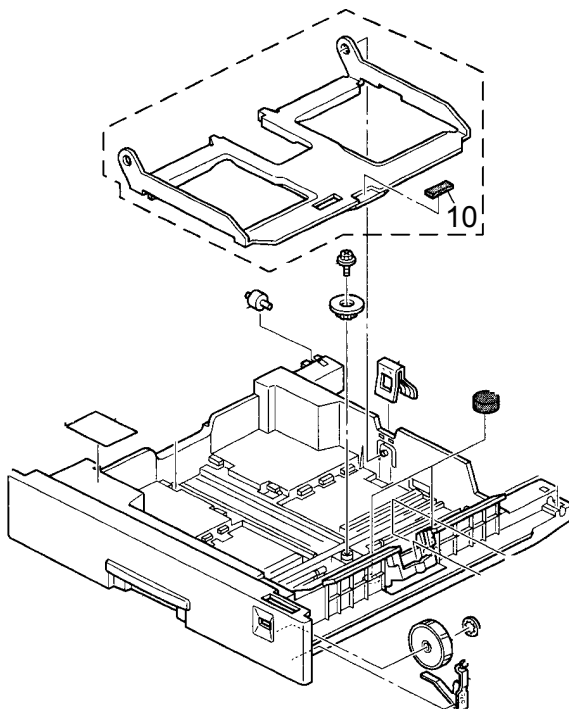
| MODEL NAME | DESTINATION | CODE | SERIAL NO. |
|------------|------------------------------------|---------|-------------|
| PS400 | All RICOH subsidiaries, NRG, SAVIN | A861-17 | H1600400001 |
| PS400 | Infotec | A861-26 | 3U80600001 |
| PS400 | Lanier | A861-55 | L0490040001 |

| | | | |
|---|---|--|---|
| Model: Stinger-C1 Paper Tray Unit/1 Tray (PS400) | | Date: 29-Jun-00 | No.: MA861005 |
| Modified Article: Bottom plate pad modification - OHP transparency feed | | | Prepared by: K. Miura |
| From: Technical Services Dept., GTS Division | | | |
| Reason for Modification: | <input type="checkbox"/> Parts catalog correction <input type="checkbox"/> To facilitate assembly <input type="checkbox"/> Part standardization | <input type="checkbox"/> Vendor change <input checked="" type="checkbox"/> To improve reliability <input type="checkbox"/> Other | <input type="checkbox"/> To meet standards () |

In order to ensure proper feed of OHP transparencies, a material with a lower rubber content is now used for the bottom plate pad. This material has a lower coefficient of friction and is effective against the following symptoms of OHP feed:

- Last sheet non-feed (jam display)
- Skewing
- Noise

| Old part number | New part number | Description | Q'ty | Int | Page | Index | Note |
|-----------------|-----------------|------------------|------|-----|------|-------|------|
| G0292608 | 52152713 | Bottom Plate Pad | 1 | X/O | 5 | 10 | |



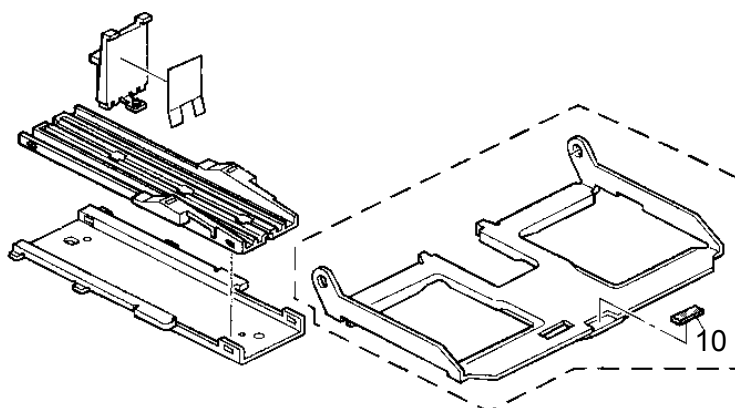
RCL (Japan) Production

| MODEL NAME | DESTINATION | CODE | SERIAL NO. |
|------------|------------------------------------|---------|--------------|
| PS400 | All RICOH subsidiaries, NRG, SAVIN | A861-17 | H1690900001 |
| PS400 | Infotec | A861-26 | 3U809900001 |
| PS400 | Lanier | A861-55 | L04990900001 |

| | | | |
|--|---|---|---|
| Model: Stinger-C1 Paper Tray Unit / 1 Tray (PS400) | | Date: 12-Oct-00 | No.: MA861006 |
| Modified Article: Base Pad | | Prepared by: K. Miura | |
| From: Technical Services Dept., GTS Division | | | |
| Reason for Modification: | <input type="checkbox"/> Parts catalog correction | <input type="checkbox"/> Vendor change | <input type="checkbox"/> To meet standards () |
| | <input type="checkbox"/> To facilitate assembly | <input type="checkbox"/> To improve reliability | |
| | <input type="checkbox"/> Part standardization | <input checked="" type="checkbox"/> Other | |

Due to the measurement specifications of the bottom plate pad, it is possible for the pad to be wider than the opening in the bottom plate. To ensure that the pad will fit in the opening, the base pad for the Russian will be used.

| Old part number | New part number | Description | Q'ty | Int | Page | Index | Note |
|-----------------|-----------------|------------------|------|-----|------|-------|------|
| 52152713 | | Bottom Plate Pad | 1 | O/O | 5 | 10 | |
| | A2672917 | Base Pad | 1 | O/O | 5 | 10 | |



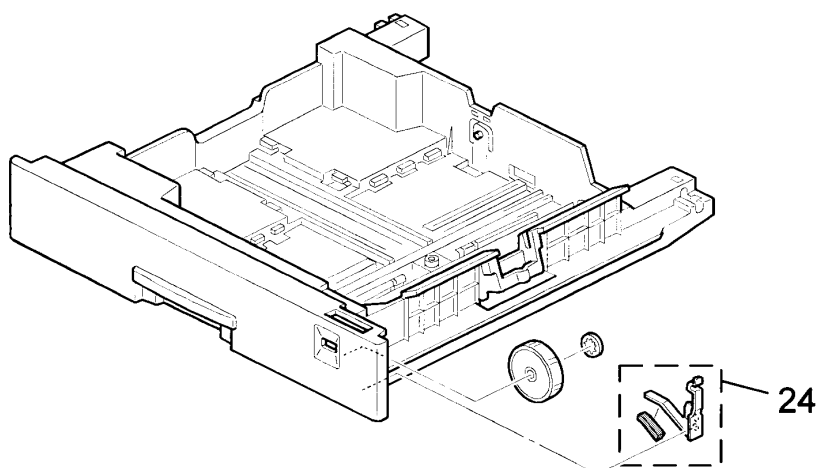
RCL (Japan) Production

| MODEL NAME | DESTINATION | CODE | SERIAL NO. |
|------------|------------------------------------|---------|-------------|
| PS400 | All RICOH subsidiaries, NRG, SAVIN | A861-17 | H1691001191 |
| PS400 | Infotec | A861-26 | 3U81190001 |
| PS400 | Lanier | A861-55 | L0499110001 |

| | | | |
|---|---|--|--|
| Model: Stinger-C1 Paper Tray Unit/1Tray (PS400) | | Date: 26-Feb-01 | No.: MA861007 |
| Modified Article: Spring Plate | | Prepared by: K. Miura | |
| From: Technical Services Dept., GTS Division | | | |
| Reason for Modification: | <input type="checkbox"/> Parts catalog correction <input type="checkbox"/> To facilitate assembly <input type="checkbox"/> Part standardization | <input type="checkbox"/> Vendor change <input type="checkbox"/> To improve reliability <input checked="" type="checkbox"/> Other | <input type="checkbox"/> To meet standards () |

The edge of the spring pate for the paper size dial is relatively sharp. To ensure proper safety, a sponge has been added to the plate.

| Old part number | New part number | Description | Q'ty | Int | Page | Index | Note |
|-----------------|-----------------|-----------------------|------|-----|------|-------|------|
| A2672868 | A2672870 | Sponge – Spring Plate | 1 | X/O | 5 | 24 | |



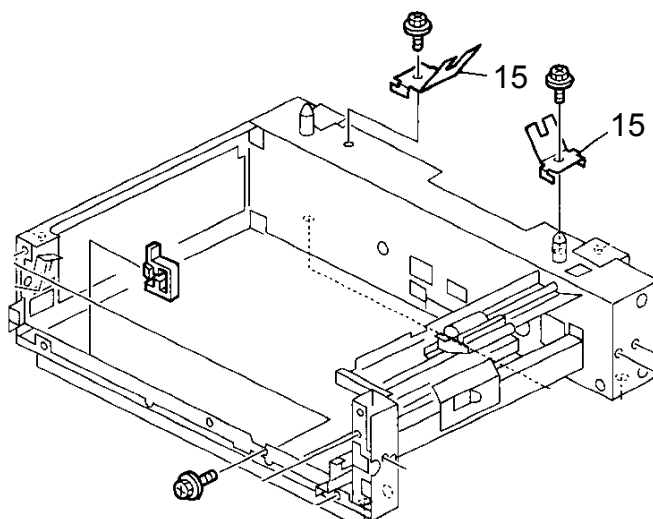
RCL (Japan) Production

| MODEL NAME | DESTINATION | CODE | SERIAL NO. |
|------------|------------------------------------|---------|-------------|
| PS400 | All RICOH subsidiaries, NRG, SAVIN | A861-17 | H1601200001 |
| PS400 | Infotec | A861-26 | 3U8120xxxx |
| PS400 | Lanier | A861-55 | L0490120001 |

| | | | |
|---|---|--|--|
| Model: Stinger-C1 Paper Tray Unit/1Tray (PS400) | | Date: 13-Apr-01 | No.: MA861008 |
| Modified Article: Spring Plate | | Prepared by: K. Miura | |
| From: Technical Services Dept., GTS Division | | | |
| Reason for Modification: | <input type="checkbox"/> Parts catalog correction <input type="checkbox"/> To facilitate assembly <input type="checkbox"/> Part standardization | <input type="checkbox"/> Vendor change <input type="checkbox"/> To improve reliability <input checked="" type="checkbox"/> Other | <input type="checkbox"/> To meet standards () |

Although previously, a mylar was added to the spring plate to protect it from damage (MB #MA861003), the shape of the spring plate itself has now been modified to perform the same function.

| Old part number | New part number | Description | Q'ty | Int | Page | Index | Note |
|-----------------|-----------------|--------------|------|-----|------|-------|------|
| A8601140 | B3841146 | Spring Plate | 2 | X/O | 3 | 15 | |



RCL (Japan) Production

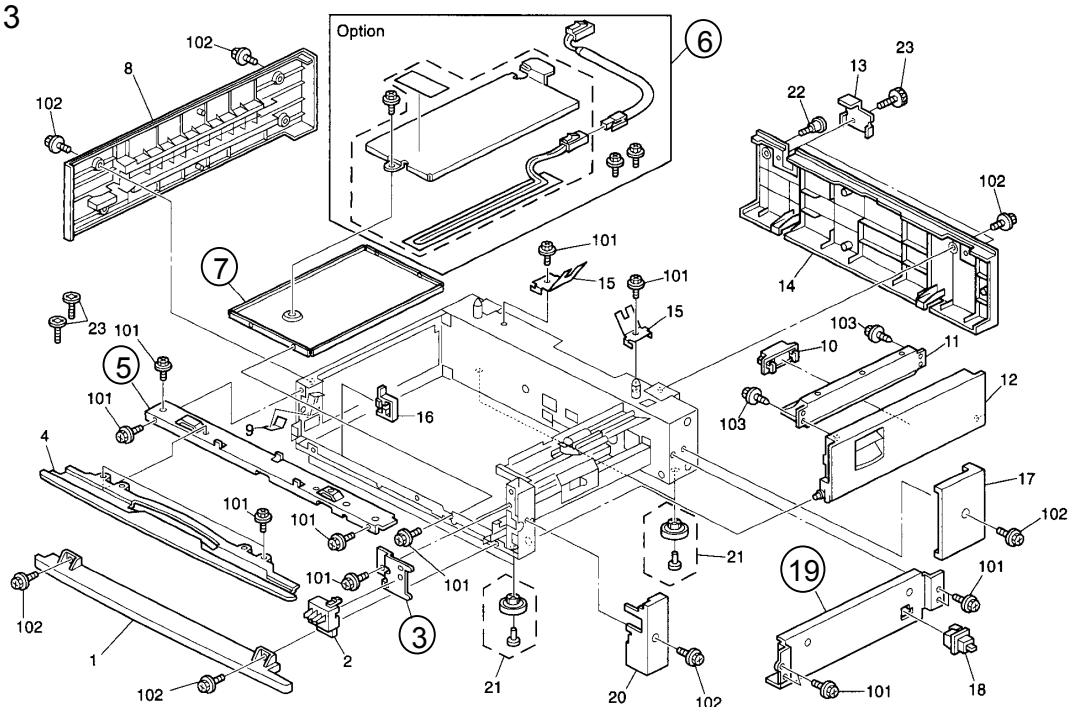
| MODEL NAME | DESTINATION | CODE | SERIAL NO. |
|------------|------------------------------------|---------|-------------|
| PS400 | All RICOH subsidiaries, NRG, SAVIN | A861-17 | H1610300001 |
| PS400 | Infotec | A861-26 | 3U8041XXXX |
| PS400 | Lanier | A861-55 | L0491030001 |

| | | | |
|--|---|--|--|
| Model: Stinger-C1 Paper Tray Unit / 1 Tray (PS400) | | Date: 10-Oct-01 | No.: MA861009 |
| Modified Article: Bracket Material Change | | Prepared by: K. Miura | |
| From: Technical Services Dept., GTS Division | | | |
| Reason for Modification: | <input type="checkbox"/> Parts catalog correction <input type="checkbox"/> To facilitate assembly <input type="checkbox"/> Part standardization | <input type="checkbox"/> Vendor change <input type="checkbox"/> To improve reliability <input checked="" type="checkbox"/> Other | <input type="checkbox"/> To meet standards () |

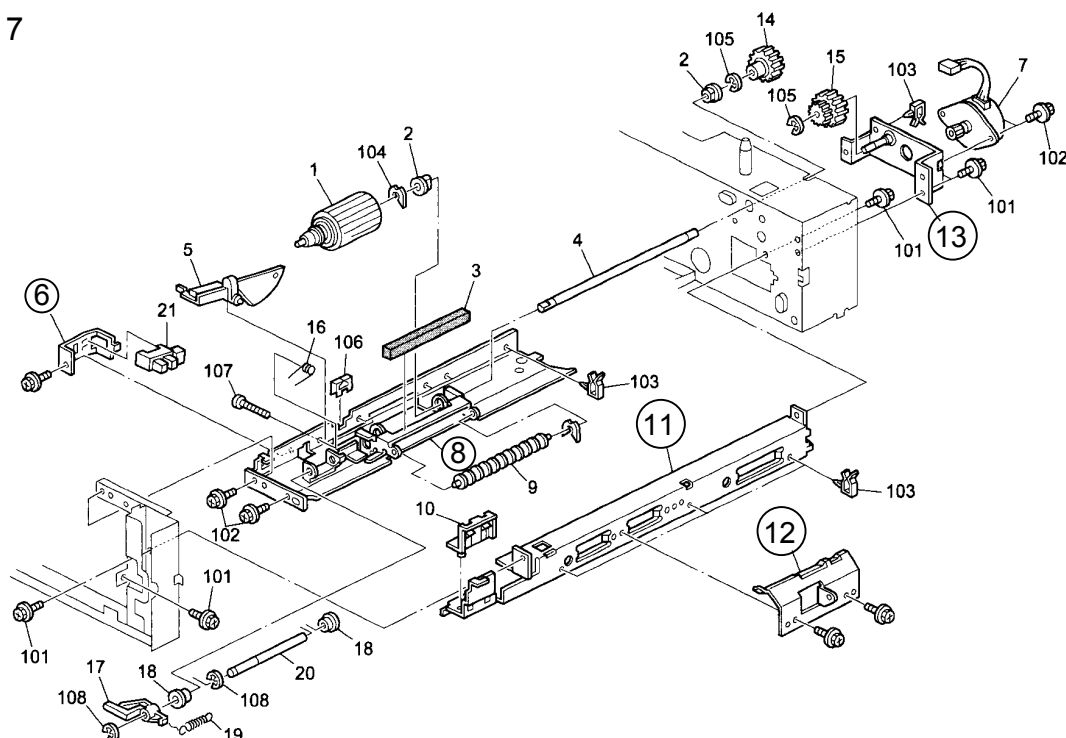
A material change has been applied to the following brackets and bracket portions of the following components.

| Old part number | New part number | Description | Q'ty | Int | Page | Index | Note |
|-----------------|-----------------|--------------------------------|------|-----|------|-------|------|
| A8611106 | B3851106 | Upper Front Stay | 1 | O/O | 3 | 5 | |
| A8611108 | B3851108 | Right Stay | 1 | O/O | 3 | 19 | |
| A8611123 | B3851123 | Bracket - Paper Size Switch | 1 | O/O | 3 | 3 | |
| A8611136 | B3851136 | Tray Heater Bracket | 1 | O/O | 3 | 7 | |
| A8616300 | B3856300 | Tray Heater | 1 | O/O | 3 | 6 | |
| A2672805 | B0242805 | Bracket - Paper End Sensor | 2 | O/O | 7 | 6 | |
| A2672842 | B0242842 | Bracket - Friction Pad Guide | 2 | O/O | 7 | 12 | |
| A8601090 | B3841090 | Right Guide Rail | 2 | O/O | 7 | 11 | |
| A8602555 | B3842555 | Feed Roller Bracket | 2 | O/O | 7 | 8 | |
| A8612825 | B3852825 | Feed Motor Bracket | 1 | O/O | 7 | 13 | |
| A2672781 | B0242781 | Pressure Lever Bracket | 2 | O/O | 9 | 26 | |
| A2672908 | B0242908 | Tray Holder Bracket | 2 | O/O | 9 | 33 | |
| A8602726 | B3842726 | Lift Motor Bracket | 2 | O/O | 9 | 12 | |
| A8602728 | B3842728 | Spring Holder Bracket | 2 | O/O | 9 | 17 | |
| A8602893 | B3842893 | Actuator - Paper Height Sensor | 2 | O/O | 9 | 7 | |
| A8602895 | B3842895 | Lower Lever - Lift Motor | 1 | O/O | 9 | 24 | |
| A8611125 | B3851125 | Rear Cover Bracket | 2 | O/O | 9 | 34 | |
| A8611129 | B3851129 | Interface Bracket Guard | 1 | O/O | 9 | 32 | |
| A8611140 | B3851140 | Interface Board Bracket | 1 | O/O | 9 | 28 | |
| A8611186 | B3851186 | Spring Guard | 1 | O/O | 9 | 36 | |
| A8612566 | B3852566 | Main Bracket - Lift Motor | 1 | O/O | 9 | 27 | |

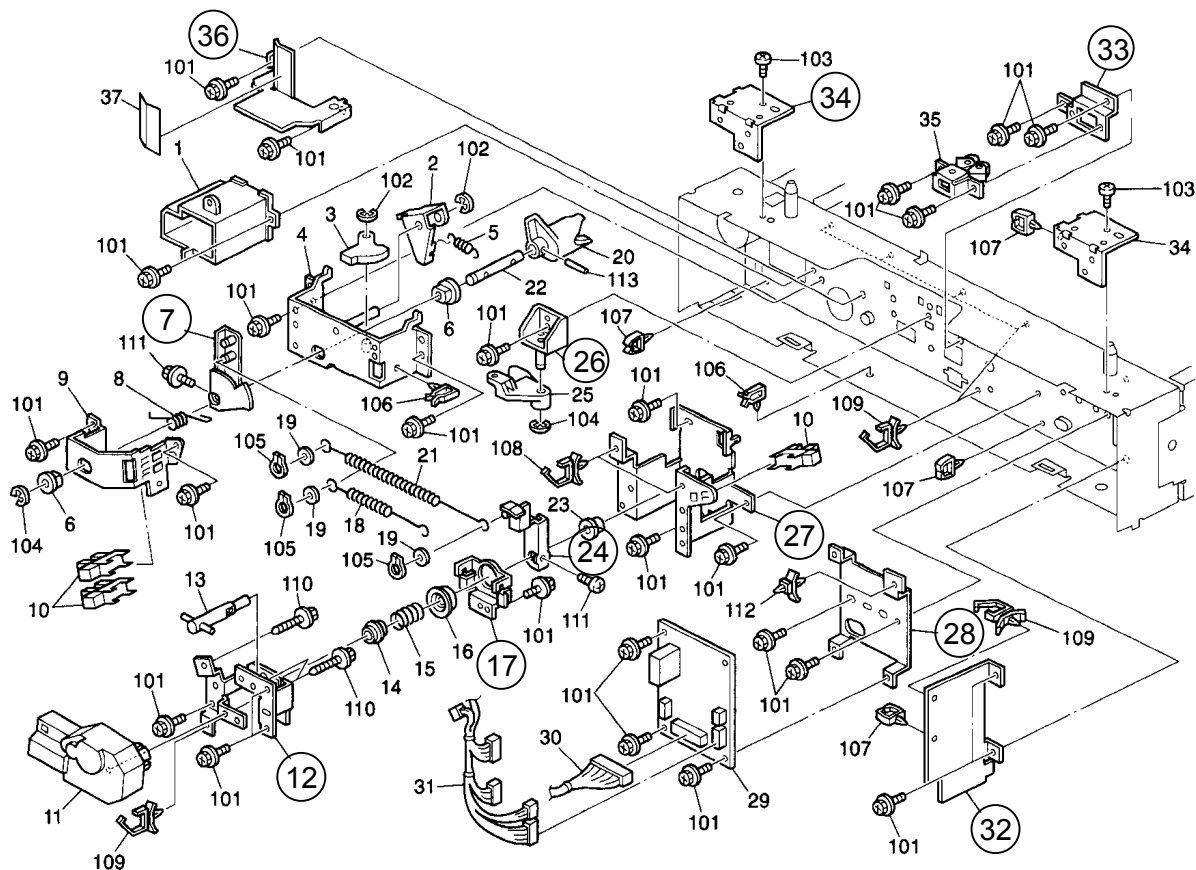
Page 3



Page 7



Page 9



Model: Stinger-C1 Paper Tray Unit / 1 Tray (PS400)

Date: 10-Oct-01

No.: MA861009

RCL (Japan) Production

| MODEL NAME | DESTINATION | CODE | SERIAL NO. |
|------------|------------------------------------|---------|-------------|
| PS400 | All RICOH subsidiaries, NRG, SAVIN | A861-17 | H1610300001 |
| PS400 | Infotec | A861-26 | 3U8041xxxx |
| PS400 | Lanier | A861-55 | L0491030001 |

Model: Stinger-C1 Paper Tray Unit /1Tray (PS400)

Date: 10-Oct-01

No.: MA861010

Modified Article: Parts Catalog Correction

Prepared by: K. Miura

From: Technical Services Dept., GTS Division

Reason for
Modification:

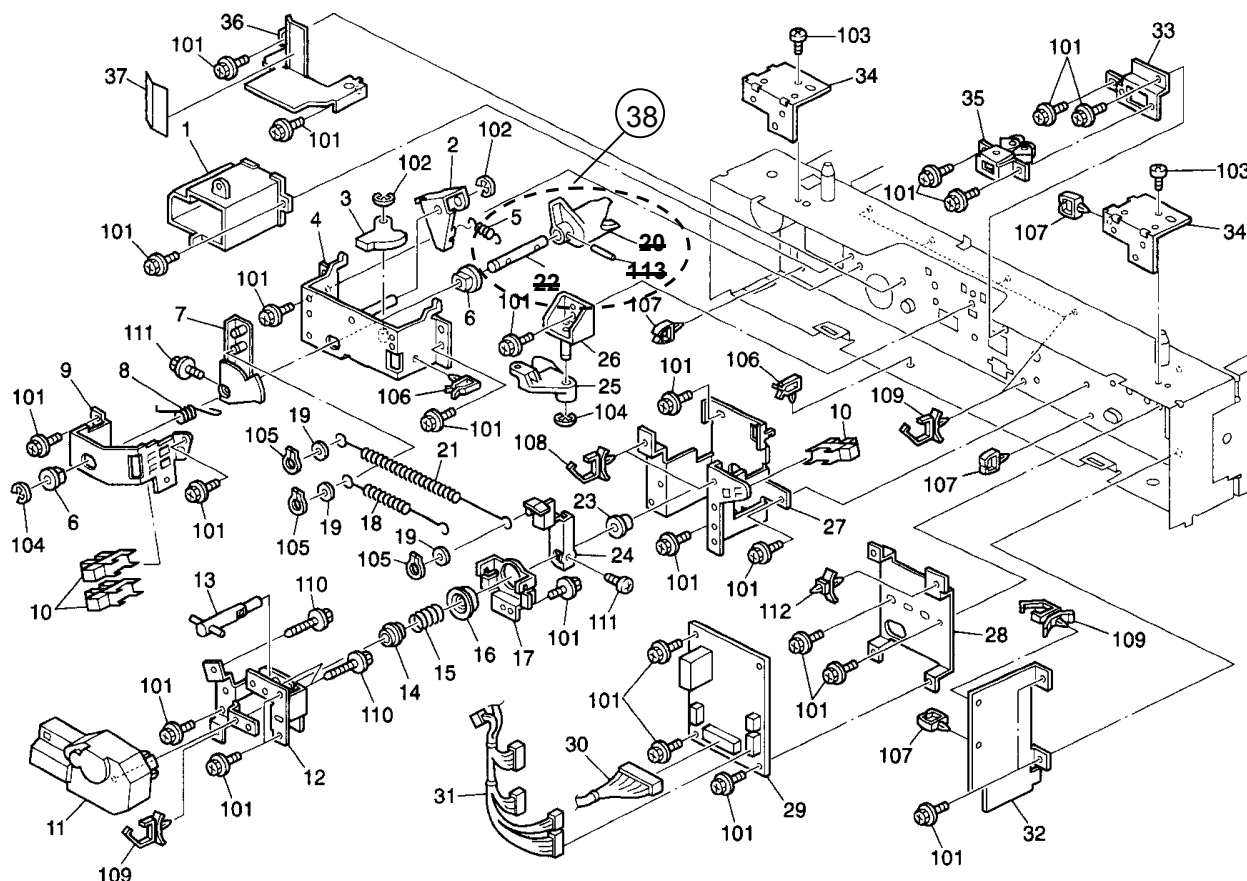
- ☒ Parts catalog correction
☐ To facilitate assembly
☐ Part standardization

- ☐ Vendor change
☐ To improve reliability
☐ Other

- ☐ To meet standards
()

Please correct your Part Catalog as follows:

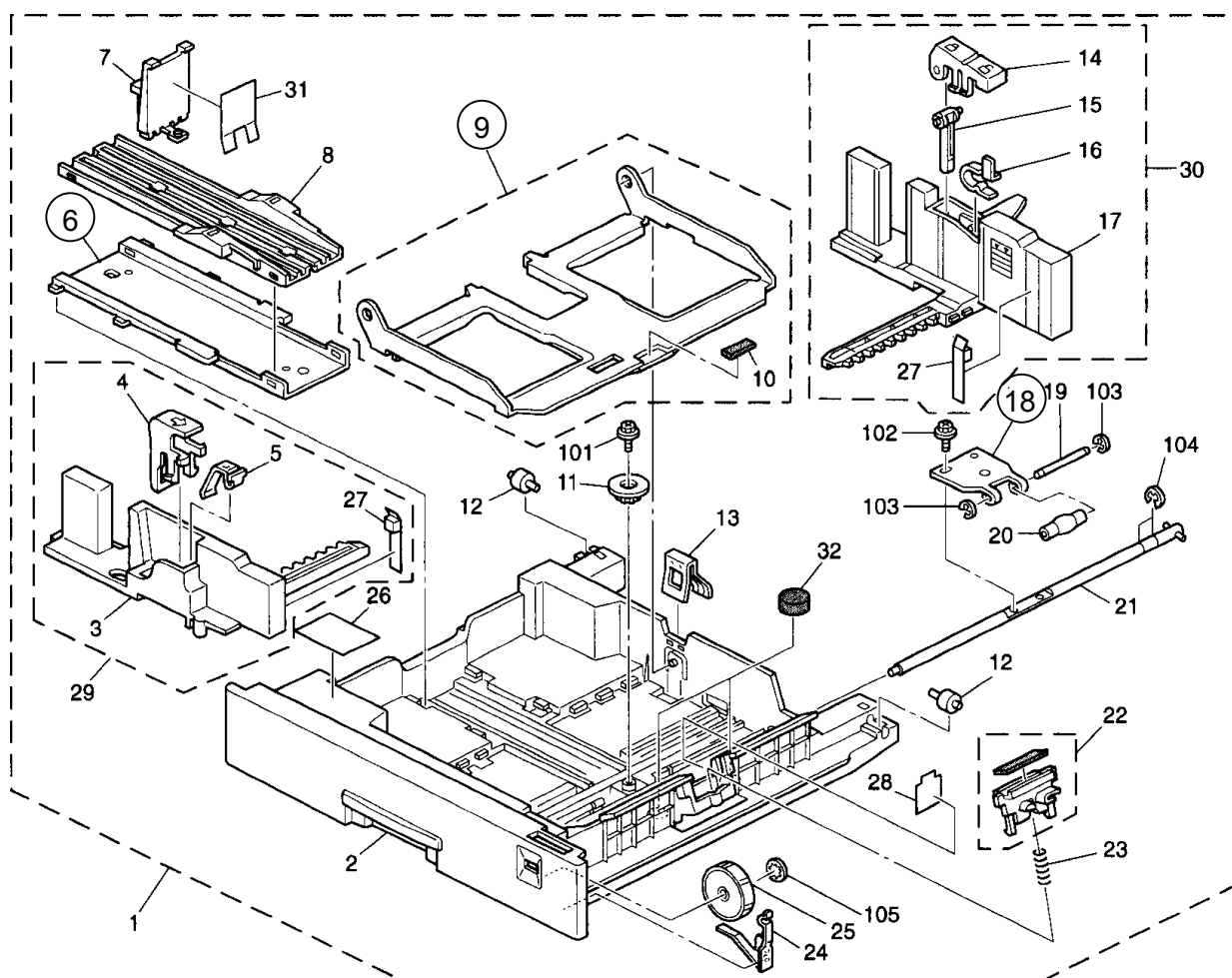
| Old part number | New part number | Description | Q'ty | Page | Index | Note |
|-----------------|-----------------|---------------------|------|------|-------|------|
| A2672761 | | Joint – Shaft | 1 | 9 | 20 | |
| A2672762 | | Shaft | 1 | 9 | 22 | |
| 06230140E | | Spring Pin – 3x14mm | 1 | 9 | 113 | |
| | A2672756 | Joint - Shaft | 1 | 9 | 38 | |



| | | | |
|---|---|---|--|
| Model: Stinger-C1 Paper Tray Unit / 1Tray (PS400) | | Date: 10-Oct-01 | No.: MA861011 |
| Modified Article: Paper Feed Unit | | Prepared by: K. Miura | |
| From: Technical Services Dept., GTS Division | | | |
| Reason for Modification: | <input type="checkbox"/> Parts catalog correction | <input type="checkbox"/> Vendor change | <input type="checkbox"/> To meet standards () |
| | <input type="checkbox"/> To facilitate assembly | <input type="checkbox"/> To improve reliability | |
| | <input type="checkbox"/> Part standardization | <input checked="" type="checkbox"/> Other | |

A material change has been applied to the following brackets and bracket portions of the following components.

| Old part number | New part number | Description | Q'ty | Int | Page | Index | Note |
|-----------------|-----------------|------------------|------|-----|------|-------|------|
| A2672874 | B0242874 | Base Slider | 1 | O/O | 5 | 6 | |
| A2672861 | B0242861 | Bottom Plate | 1 | O/O | 5 | 9 | |
| A2672856 | B0242856 | Bracket - Rising | 1 | O/O | 5 | 18 | |

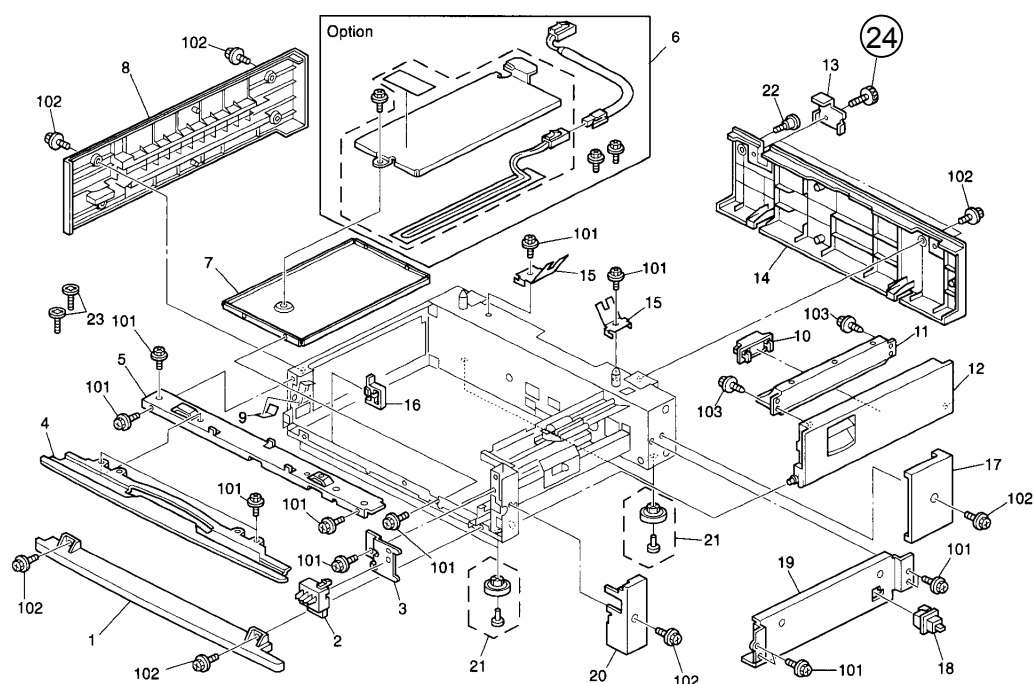


| | | | |
|---|---|--|--|
| Model: Stinger-C1 Paper Tray Unit/1Tray (PS400) | | Date: 13-Dec-01 | No.: MA861012 |
| Modified Article: Rear Cover Screw | | Prepared by: K.Miura | |
| From: Technical Services Dept., GTS Division | | | |
| Reason for Modification: | <input type="checkbox"/> Parts catalog correction <input type="checkbox"/> To facilitate assembly <input type="checkbox"/> Part standardization | <input type="checkbox"/> Vendor change <input checked="" type="checkbox"/> To improve reliability <input type="checkbox"/> Other | <input type="checkbox"/> To meet standards () |

To maximize the Rear Cover's resistance to warping under high temperatures (over 60°C), the M4x10 Flat Knob Screw for the cover has been changed to an M4x11 screw in the two areas shown below (index 24).

Note: Since the M4x10 screw (index 23) is still being used in the remaining 2 areas, its service parts quantity has been changed from 4 to 2 with no P/N change.

| Old part number | New part number | Description | Q'ty | Int | Page | Index | Note |
|-----------------|-----------------|-------------------------|------|-----|------|-------|------|
| AA143508 | AA143508 | Flat Knob Screw – M4x10 | 4-2 | | 3 | 23 | |
| | AA143775 | Screw: M4x11 | 2 | X/O | 3 | 24 | |



RCL (Japan) Production

| MODEL NAME | DESTINATION | CODE | SERIAL NO. |
|------------|------------------------------------|---------|-------------|
| PS400 | All RICOH subsidiaries, NRG, SAVIN | A861-17 | H1610300001 |
| PS400 | Infotec | A861-26 | 3U8012xxxx |
| PS400 | Lanier | A861-55 | L0491030001 |

| | | | |
|--|---|--|--|
| Model: Stinger-C1 Paper Tray Unit / 1 Tray (PS400) | | Date: 14-Dec-01 | No.: MA861013 |
| Modified Article: Guide Plate Cushion | | Prepared by: K. Miura | |
| From: Technical Services Dept., GTS Division | | | |
| Reason for Modification: | <input type="checkbox"/> Parts catalog correction <input type="checkbox"/> To facilitate assembly <input type="checkbox"/> Part standardization | <input type="checkbox"/> Vendor change <input checked="" type="checkbox"/> To improve reliability <input type="checkbox"/> Other | <input type="checkbox"/> To meet standards () |

The following part has been changed to ensure that noise does not occur during feeding.

| Old part number | New part number | Description | Q'ty | Int | Page | Index | Note |
|-----------------|-----------------|---------------------|------|-----|------|-------|------|
| A8602559 | B3852559 | Cushion Guide Plate | 1 | O/O | 7 | 3 | |

